

# MATERNITY CARE FOR EALING RESIDENTS

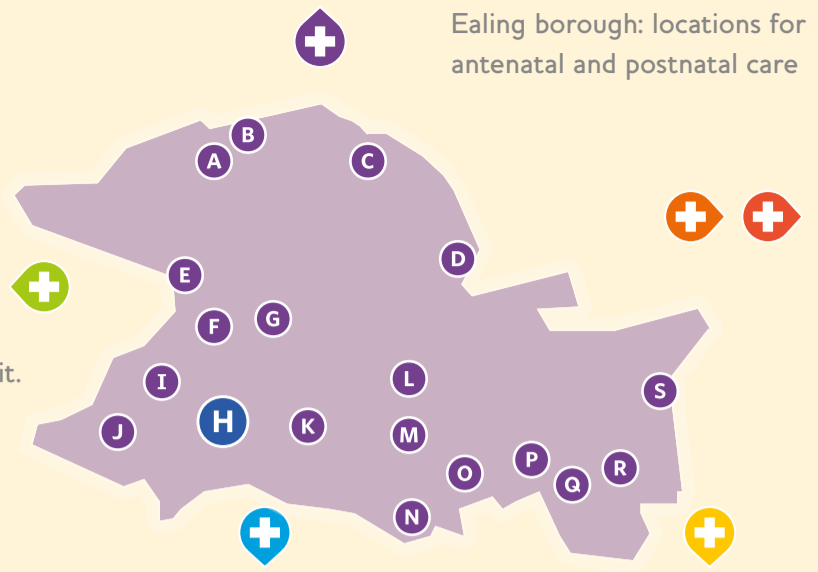
You can no longer give birth at Ealing Hospital. This poster shows where women living in Ealing can choose to have their antenatal and postnatal care, depending on which hospital they have chosen to give birth in.

The improvements to community care mean that, for many pregnant women, more care can be provided in convenient locations around Ealing and in neighbouring boroughs.

Women in Ealing can also choose to access community antenatal and postnatal care in the boroughs of their chosen unit.

Women who have underlying health conditions and need additional support may not be able to have all their appointments in the community as they may require additional hospital-based support.

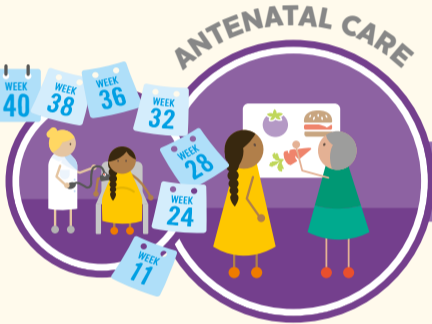
Ealing borough: locations for antenatal and postnatal care



Key CC Children's Centre HC Health Centre



If your chosen hospital is full, you will be contacted to discuss options and to book you elsewhere.



Breastfeeding support will be available for all women at sites across the Borough.

	CHELSEA AND WESTMINSTER HOSPITAL	HILLINGDON HOSPITAL	NORTHWICK PARK HOSPITAL	QUEEN CHARLOTTE'S AND CHELSEA HOSPITAL	ST MARY'S HOSPITAL	WEST MIDDLESEX UNIVERSITY HOSPITAL
<b>CHOOSING A UNIT TO GIVE BIRTH IN</b>	Chelsea and Westminster Hospital	Hillingdon Hospital	Northwick Park Hospital	Queen Charlotte's and Chelsea Hospital	St Mary's Hospital	West Middlesex University Hospital
<b>ANTENATAL CARE</b>	<p>Women can have care in the Ealing borough, but it will be provided by midwives from other hospitals.</p> <ul style="list-style-type: none"> <li>Chelsea and Westminster Hospital</li> </ul>	<ul style="list-style-type: none"> <li>Hillingdon Hospital</li> <li>Ealing Hospital*</li> <li>Islip Manor CC</li> <li>Grand Union Village HC</li> <li>Jubilee Gardens HC</li> <li>Southall Broadway HC</li> </ul>	<ul style="list-style-type: none"> <li>Northwick Park Hospital</li> <li>Ealing Hospital*</li> <li>Petts Hill CC</li> <li>Horsenden CC</li> <li>Perivale CC</li> <li>Windmill CC</li> </ul>	<ul style="list-style-type: none"> <li>Queen Charlotte's and Chelsea Hospital</li> <li>St Mary's Hospital</li> <li>Ealing Hospital*</li> <li>Windmill CC</li> <li>Hanwell CC</li> <li>Hathaway CC</li> <li>Mattock Lane HC</li> <li>Grange CC</li> <li>Maples CC</li> <li>John Perryn CC</li> </ul>	<ul style="list-style-type: none"> <li>St Mary's Hospital</li> <li>Queen Charlotte's and Chelsea Hospital</li> <li>Ealing Hospital*</li> <li>Windmill CC</li> <li>Hanwell CC</li> <li>Hathaway CC</li> <li>Mattock Lane HC</li> <li>Grange CC</li> <li>Maples CC</li> <li>John Perryn CC</li> </ul>	<ul style="list-style-type: none"> <li>West Middlesex University Hospital</li> <li>Ealing Hospital*</li> <li>Southall Broadway HC</li> <li>Featherstone Road HC</li> <li>Log Cabin CC</li> </ul>
<b>SCANS</b>	Chelsea and Westminster Hospital	Hillingdon Hospital	Northwick Park Hospital Ealing Hospital*	Queen Charlotte's and Chelsea Hospital	St Mary's Hospital	West Middlesex University Hospital
<b>BIRTH</b>	Chelsea and Westminster Hospital Home	Hillingdon Hospital Home	Northwick Park Hospital Home	Queen Charlotte's and Chelsea Hospital Home	St Mary's Hospital Home	West Middlesex University Hospital Home
<b>POSTNATAL CARE</b>	<p>Women can have care in the Ealing borough, but it will be provided by midwives from other hospitals.</p> <ul style="list-style-type: none"> <li>Home</li> <li>Chelsea and Westminster Hospital</li> </ul>	<ul style="list-style-type: none"> <li>Home</li> <li>Hillingdon Hospital</li> <li>Islip Manor CC</li> <li>Grand Union Village HC</li> <li>Jubilee Gardens HC</li> <li>Southall Broadway HC</li> </ul>	<ul style="list-style-type: none"> <li>Home</li> <li>Ealing Hospital*</li> <li>Northwick Park Hospital</li> <li>Petts Hill CC</li> <li>Horsenden CC</li> <li>Perivale CC</li> <li>Windmill CC</li> </ul>	<ul style="list-style-type: none"> <li>Home</li> <li>St Mary's Hospital</li> <li>Windmill CC</li> <li>Hanwell CC</li> <li>Hathaway CC</li> <li>Mattock Lane HC</li> <li>Grange CC</li> <li>South Acton CC</li> <li>Maples CC</li> </ul>	<ul style="list-style-type: none"> <li>Home</li> <li>St Mary's Hospital</li> <li>Windmill CC</li> <li>Hanwell CC</li> <li>Hathaway CC</li> <li>Mattock Lane HC</li> <li>Grange CC</li> <li>South Acton CC</li> <li>Maples CC</li> </ul>	<ul style="list-style-type: none"> <li>Home</li> <li>Ealing Hospital*</li> <li>Southall Broadway HC</li> <li>Featherstone Road HC</li> <li>Log Cabin CC</li> </ul>

**!** This poster is about community services in Ealing. There is also antenatal and postnatal care available in other boroughs in North West London. Please ask your midwife for the most up to date information. All sites are subject to change.

**H** \* within antenatal department (referred to from 6th July 2015 as NWL Community Maternity Clinic)